




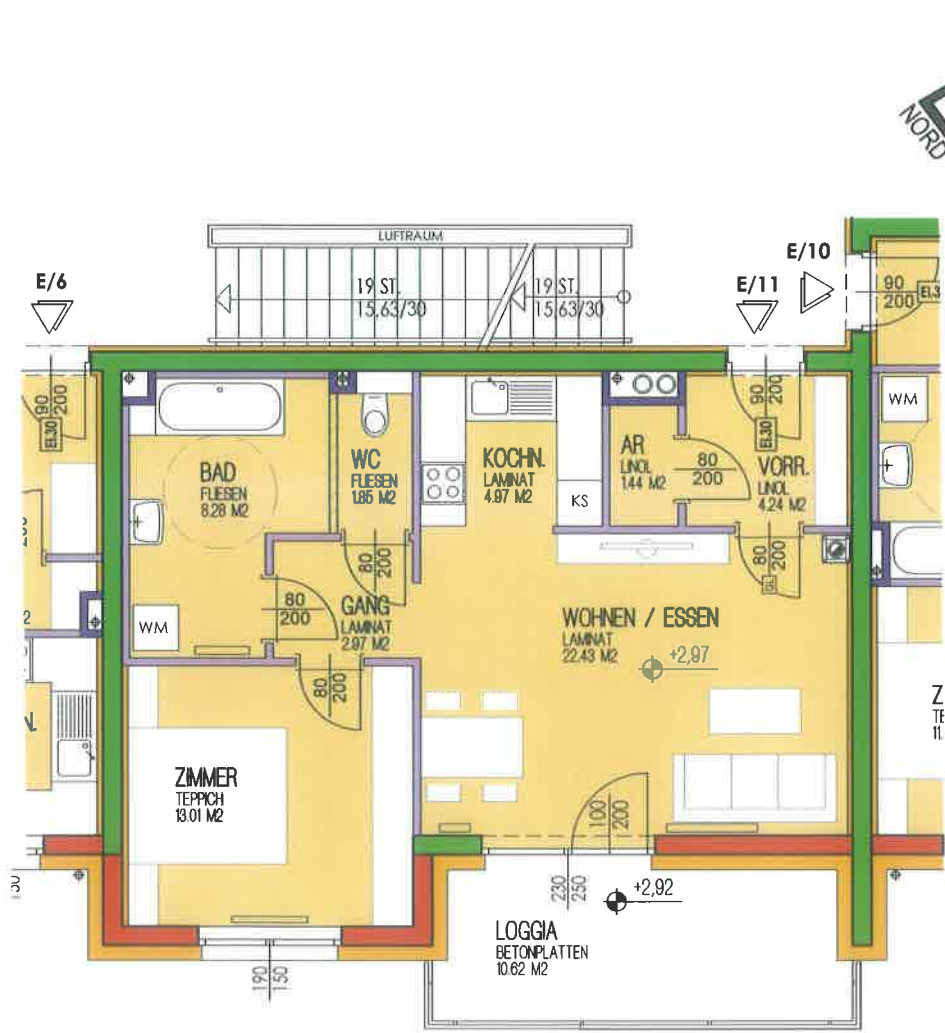
	BLOCK E		GEMEINNÜTZIGE BAUGENOSSENSCHAFT ÖSTERREICHISCHER SIEDLER UND MIETER		
	STOCK TOP NR.:	1.OG E/11	reg. Gen.m.b.H., A-2521 TRUMAU, GEBÖSSTRASSE 1, TEL.: 02253/58085		
WOHNNUTZFLÄCHE: 59,19 m ² LOGGIA: 10,62 m ² KELLERABTEIL: 5,67 m ²		WOHNHAUSANLAGE PITTEN HERZOG-PARK 114 / 2823 PITTEN		BLOCK E 1.OG E/11	
BAUHERR		PLANVERFASSER		HAUSTECHNIKER	
					
				BAUFIRMA 	



E.11 WOHNNUTZFLÄCHE 59,19 m²
 LOGGIA 10,62 m²